

CrossGuard

Monitor • Automate • Protect



WIRELESS MAGNETIC SENSOR (CG-MS)

by Senzo®

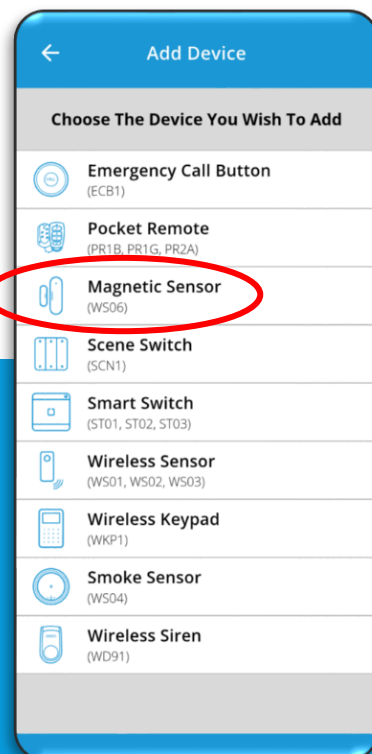
Setup Guide

STEPS TO ADD MAGNETIC SENSOR



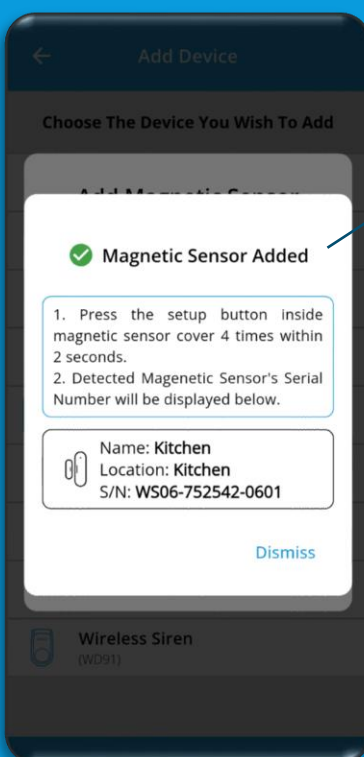
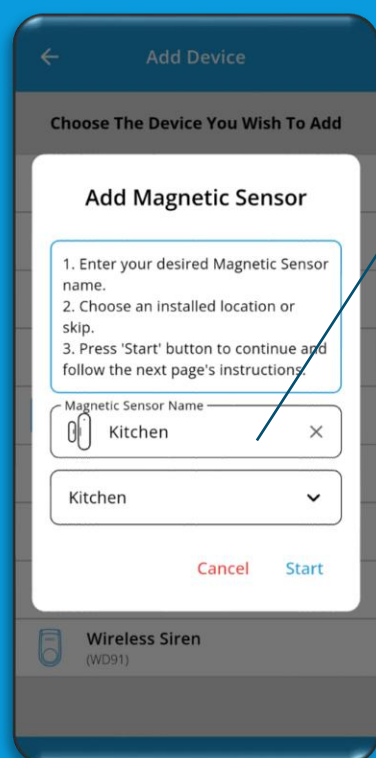
1
Login to CrossGuard mobile app,
at "HOME" Page, tap "Devices"
Then tap '+ Add' to go to Add Device page.

2
Select "Scene Switch"



3
Fill in all the details as required:
Give the Scene Switch a name and select location of the Wireless
Magnetic Sensor where it will be installed.

Then press "Start".



4
Press the setup button on the sensor
for 4 times within 2 seconds.

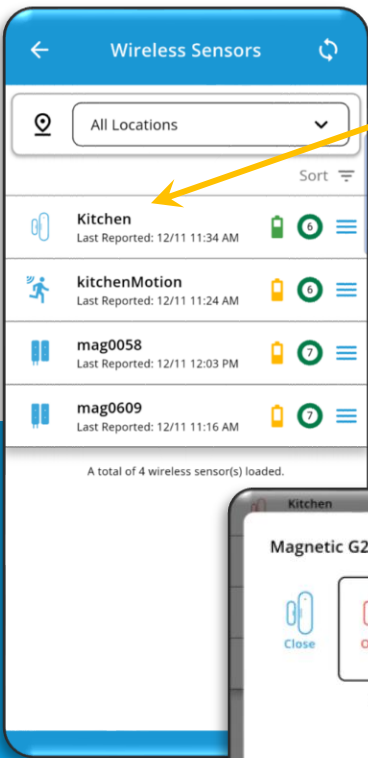
CrossGuard gateway and app will
detect and add the sensor
automatically.

Tap on "Dismiss" upon completion to
go back to "Devices" page.

5
The newly added sensor can be
found in "My Devices" page where
you can view all installed devices.

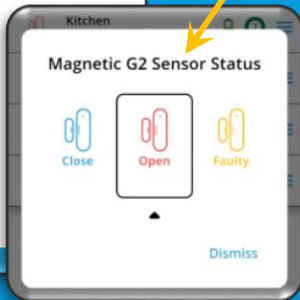
You can assign the sensor to a
configured zone in Security Alarm
settings.

MAGNETIC SENSOR FUNCTIONS



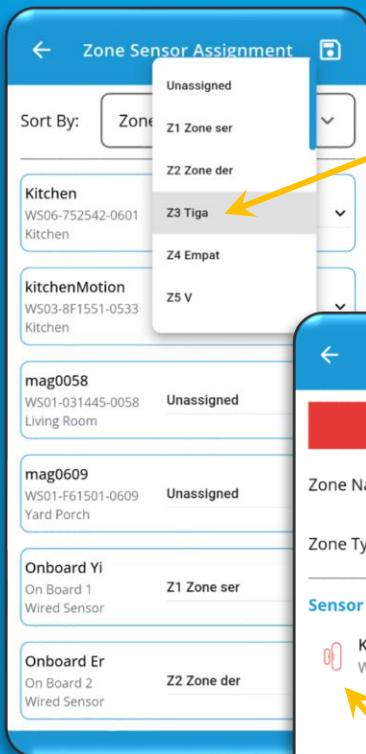
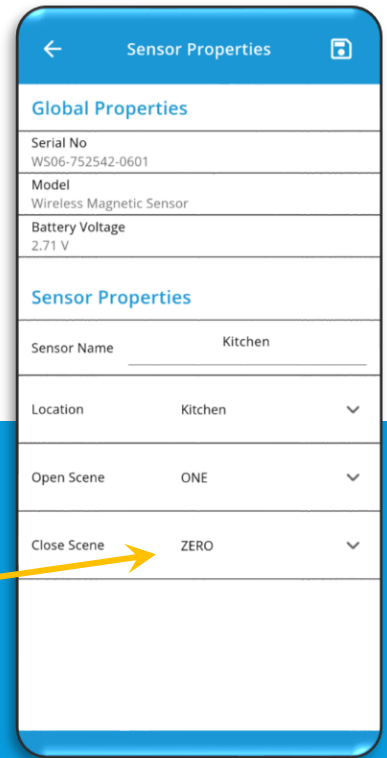
The added sensor can be found together with the full sensor list.

Tap magnetic sensor icon to view detailed status.



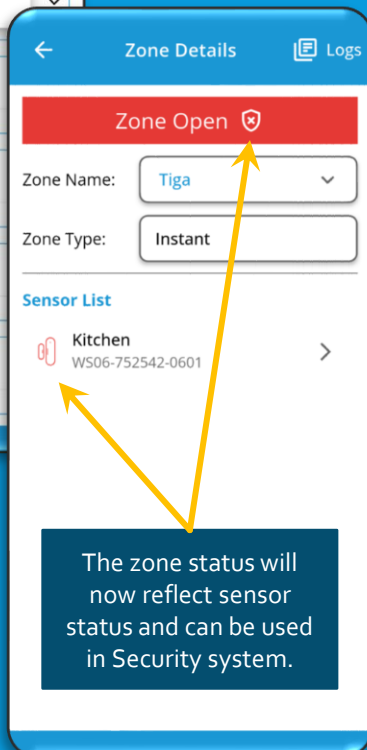
You can also launch scenes when the Sensor Opens or Closes.
Tap the menu "≡" icon, then select "Sensor Properties".

Select the scene to be triggered in the drop down.
Tap save icon "💾" when you are done.



To add the sensor to your security, go to Security -> Alarm Settings -> Sensor Assignment

Assign the sensor to a zone, by selecting from a drop down.



The zone status will now reflect sensor status and can be used in Security system.

Scan for full user guide



SETUP GUIDE

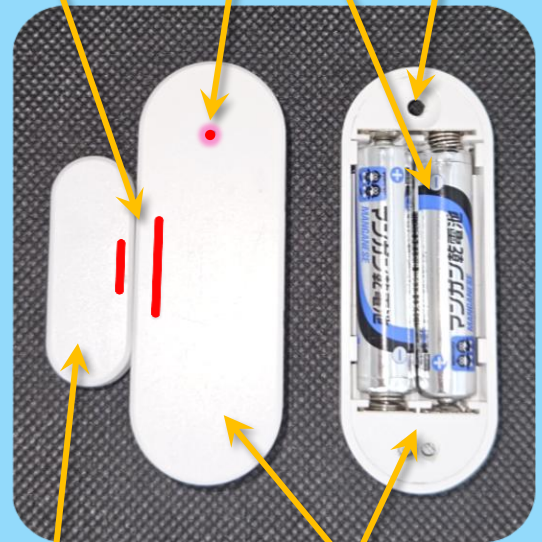
Wireless Magnetic Sensor

Make sure the lines are aligned side by side

LED Indicator

Setup Button

2xAAA Batteries



Magnetic Contact

Main Sensor